



This edition: New releases from portrait artists Simon Quinn, Toni Cogdell and Huxley, plus a striking wildlife sculpture from Cheshire local, Alex Hickman.

Simon Quinn

Portrait artist / Staffordshire, England

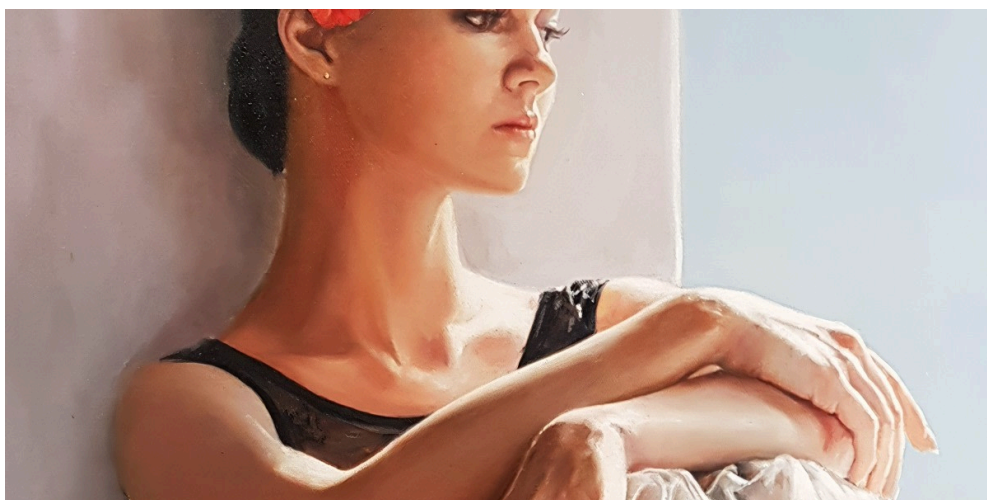
Since joining the Oil Art Advisory portfolio, Staffordshire based artist, Simon Quinn, has produced several striking portraits for the gallery, ranging from French mime artists and Geishas, to Ridley Scott's 1982 sci-fi classic, Blade Runner.

Quinn's latest release, '*An Interval of Blue*', harks back to some of his earliest paintings featuring ballerinas, and in this beautiful work, he manages to capture a moment of quiet suspension between movement and stillness.

An Interval of Blue is now available for viewing in our Knutsford gallery. The painting is currently unframed, but as always, framing costs are included in the price.



Above: "An Interval of Blue" (2026), by Simon Quinn - A photograph of the entire, unframed canvas





Above: Closeup photographs of "An Interval of Blue" (2026) by Simon Quinn

SIMON QUINN

An Interval of Blue (2026)

original

oil on box canvas

canvas size: 36 x 28 in / 91 x 71 cm

signed

£ 3,450 (price includes framing)

[VIEW ONLINE](#)

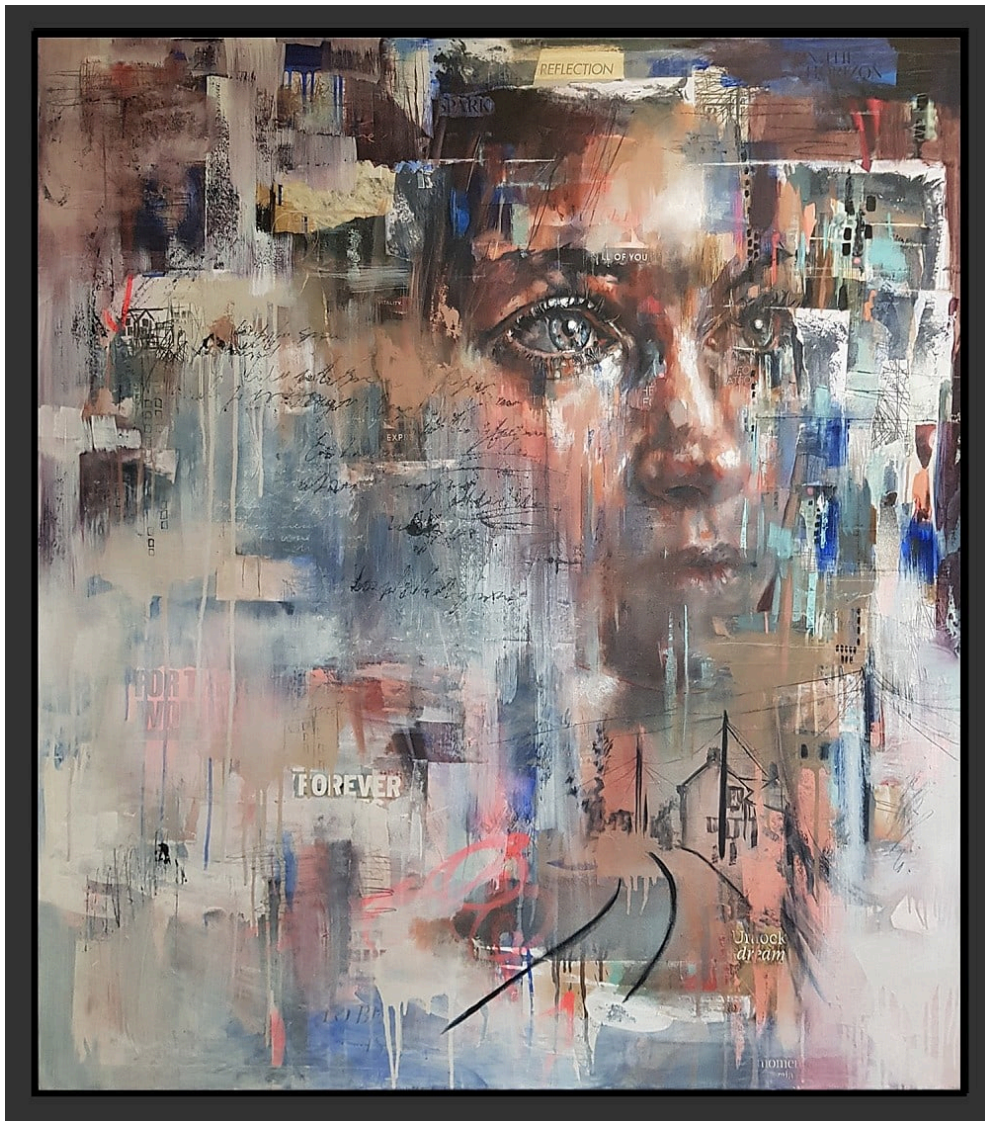
[VIEW ALL WORKS ONLINE](#)

Tony Cogdell

Abstract Figurative Portrait Artist | Bristol, England

Toni Cogdell is a contemporary, figurative artist celebrated for her evocative and deeply introspective paintings which delve into the human condition, exploring the

intricate landscapes of our inner lives and our relationship with nature.



Above: "Back to You" (2025), an original artwork by Toni Cogdell

TONI COGDELL

Back to You (2025)

A beautiful and evocative, abstract portrait in mixed-media. 'Back To You' features her signature style of blending emotive portraiture with interesting painted elements and background and foreground abstraction, along with collaged words.

original

mixed media on box canvas

canvas size: 120 x 110 cm / 47 ¼ x 43 ¼ in

signed on rear

framed in a black wooden tray frame

£ 2,850

[VIEW ONLINE](#)



Above: "Shaped Like Hope" (2025), an original artwork by Imogen Morris

TONI COGDELL

Shaped Like Hope (2025)

A striking and imposing abstract portrait, featuring an ethereal horse, painted in the Bristol based artist's evocative style, using mixed media elements to convey a sense of both mystery and calm. *This piece is currently unframed, but the framing costs are included in the price.*

original

mixed media on box canvas

canvas size: 120 x 100 cm / 47 ¼ x 39 ¼ in

signed on rear

£ 2,750 (price includes framing)

[VIEW ONLINE](#)



Above: "Wing-borne" (2023) by Toni Cogdell



TONI COGDELL

Wing-borne (2023)

A beautiful, abstract portrait in mixed-media. Wing-borne features Toni Cogdell's signature style of blending an emotive portrait with background and foreground abstraction, including thought provoking words and occasional poetry. *This piece is currently unframed, but the framing costs are included in the price.*

original

mixed media on box canvas

canvas size: 100 x 40 cm / 39 ¼ x 15 ¾ in

signed on rear

£ 1,600 (*price includes framing*)

[VIEW ONLINE](#)

[VIEW ALL WORKS ONLINE](#)

Huxley

Impressionist, Portraiture / Cheshire, England

Huxley is a local, Cheshire-based professional painter working predominantly in post-impressionist and abstract oil styles, whose art is characterised by a thoughtful balance between structure and spontaneity. Huxley uses bold colour relationships and dynamic compositions to convey atmosphere and emotion, which invite the viewer to engage with the familiar, in a new way.



Above: "The Dresser" (2026), portrait in oil on canvas, by Huxley
Below: Detailed photographs of "The Dresser" (2026)



HUXLEY

The Dresser (2026)

original

oil on canvas

canvas size: 50 x 50 cm / 19 ³/₄ x 19 ³/₄ in

signed & framed in a black wooden tray frame

£ 1,200

[VIEW ONLINE](#)

VIEW ALL WORKS ONLINE

Alex Hickman

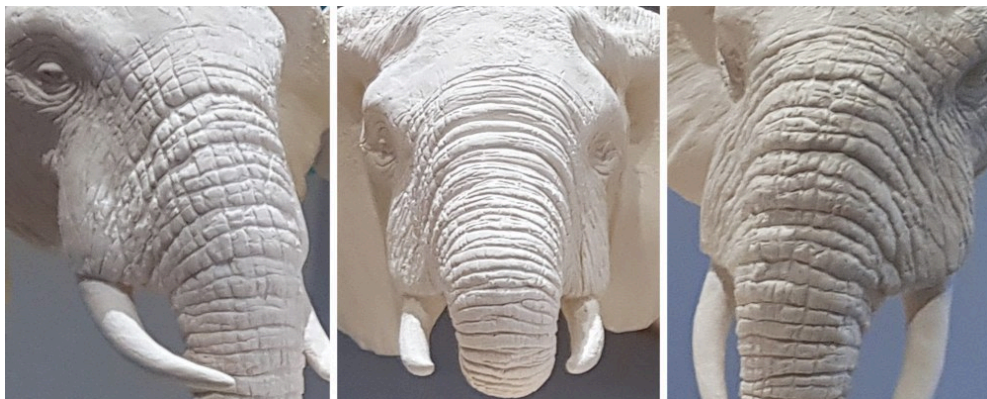
Wildlife Sculptor / Cheshire, England

New to oil art advisory, Alex Hickman has produced a series of sculptures with a wildlife theme. The first of these pieces, titled "Savanna", has been hand sculpted in earthenware clay, and then kiln-fired *without the addition of glazes*. The result is a delightfully coloured, highly textured sculpture featuring a family of elephants, drinking from a lake - all set on a polished granite plinth.

Currently, Hickman's work is available to view in the gallery and should be visible on the website later in the year, as more pieces become available.



Above: "Savanna" by Alex Hickman
Below: Detail photographs



ALEX HICKMAN

Savanna

Consisting of 5 intricately sculpted elephant heads, drinking from a water source, this work is presented in earthenware clay on a polished granite plinth. *The piece incorporates steel reinforcement, which runs through the row of 5 elephants and into the base.*

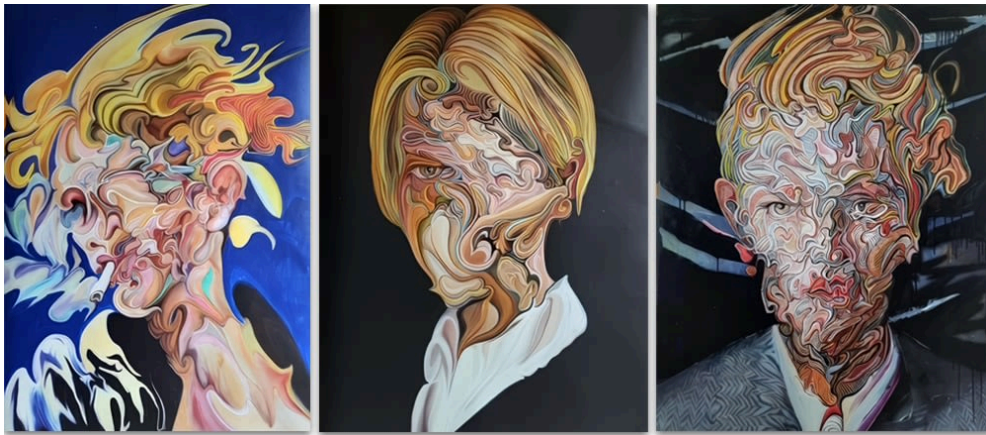
hand-sculpted earthenware clay
set on a polished granite plinth
Length 51 cm, Depth 20 cm, Height 18 cm

£2,750

NOT CURRENTLY AVAILABLE ON THE WEBSITE

Coming soon...

New paintings from the German, abstract portrait artist, **Dimitar Hinkov** are expected shortly, and his latest series features the late, great, David Bowie, rendered in Hinkov's richly textured oils.



Above: Dimitar Hinkov's "Bowie" series of oil paintings

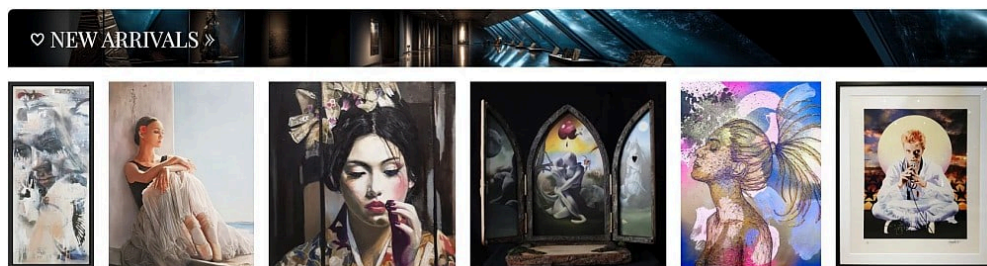
Plus, we'll have new paintings from the British artist Kerry Ann Lyons, featuring some unusual birds from around the world. *In the coming weeks, Kerry's 'birds' series will also become available to view and purchase on the website, for the very first time.*



Above: "European Bee Eaters" (2025) by Kerry Ann Lyons

New arrivals...

Visit our [New Arrivals](#) page to see the artworks as they arrive in the gallery. The page consists purely of images, with the latest artwork displayed in the top left. If you like what you see, then clicking an image brings up more information. From there, clicking on the artist's name takes you to their works page, which displays their complete portfolio.



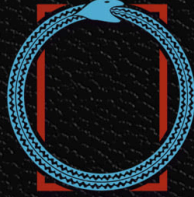
Above: A screen capture from the homepage of the Oil website, showing the latest artworks to arrive in the gallery.
TIP: Clicking on the "♥ NEW ARRIVALS »" title when on the homepage, also links to the comprehensive new arrivals page.





INDEPENDENTLY SOURCED

original paintings
sculptures
designer furnishings
ancient art crystals



LARGE FORMAT CANVASES

wall art and
installations, plus
large home, art consulting
with an interior designer



PASSIONATE ABOUT ART

expert knowledge,
art sourcing, commissioning,
authenticated resales,
& a platform for local artists



WE ACTIVELY
SUPPORT THE PRINCIPALS
OF THE DESIGN & ARTISTS
COPYRIGHT SOCIETY



INTEREST FREE FINANCE
IS AVAILABLE WITH
OWN ART



inchbald
GRADUATE

© The copyright of all artworks is retained by the originating artist or artists. All rights are reserved.

[Read this email online](#) | [Unsubscribe](#) | [Update your preferences](#) | [Visit our home page](#) | [Our privacy policy](#)

The Oil Art Advisory Gallery
8, King Street
Knutsford
Cheshire
WA16 6DL
United Kingdom