



It's been too long since our last newsletter - a consequence of processing new artworks, making some enhancements to the website and unfortunately, *having only one pair of hands*.

In this edition, portrait artist [Chris Huxley](#) joins our portfolio, we have new paintings by [Kara Strachan](#), [Katie Patel](#), [Amanda Horvath](#), [Karen Wise](#) and [Sheila Scholes](#), plus two presentation quality, giant amethyst geodes, sourced in Brazil, which are now available online in the new [Ancient Art Crystals](#) category, and also available for viewing in the gallery.

We've also made some useful website additions, including a new [Style Guide](#) - a *single page, image-based style summary of all artists in our portfolio*.

Huxley

Abstract Impressionist | Cheshire, England

Working predominantly in post-impressionist and abstract oil styles and using bold brush strokes, Huxley's art is characterised by a thoughtful balance between structure and spontaneity, using colour relationships and dynamic compositions to convey atmosphere and emotion. His paintings often invite the viewer to engage with the familiar in a new way — transforming ordinary scenes into vibrant, resonant expressions of place, energy, and mood.



Above: "Choices" (2025) by Huxley

HUXLEY

Choices (2025)

oil and cold wax on canvas

image: 60 x 60 cm / 23 ½ x 23 ½ in

signed & framed

£ 1,300

[VIEW ONLINE](#)



HUXLEY

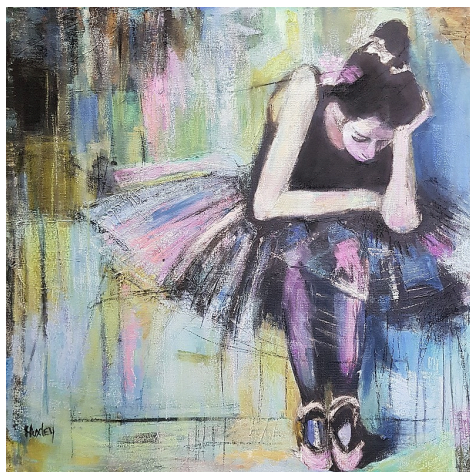
Take It (2025)

oil on canvas

image: 50 x 50 cm / 19 ¾ x 19 ¾ in

signed & framed

£1,200



HUXLEY

Waiting (2025)

acrylic and pastel on canvas

image: 50 x 50 cm / 19 ¾ x 19 ¾ in

signed & framed

£1,200

[VIEW ALL ARTWORKS](#)

Kara Strachan

Expressive Realism | Staffordshire, England

Working in acrylics and mixed media, Kara layers underpainting in complementary opposite tones, building depth and resonance beneath the surface. Her signature use of dry brush techniques creates atmospheric textures, while fluid mediums introduce movement, flow, and an almost elemental energy across the canvas.



Above: "Reflections of the Past" (2025) by Kara Strachan

KARA STRACHAN

Reflections of the Past (2025)

acrylic: dry brush, palette knife on canvas

image: 16 x 20 in / 41 x 51 cm

signed & framed

£ 1,250

[VIEW ONLINE](#)



Above: "Once Upon a Time" (2025) by Kara Strachan

KARA STRACHAN

Once Upon A Time (2025)

acrylic: dry brush, palette knife on canvas

image: 16 x 20 in / 41 x 51 cm

signed & framed

£ 1,250

[VIEW ONLINE](#)



Above: "Evening Walks" (2025) by Kara Strachan

KARA STRACHAN

Evening Walks (2025)

acrylic: dry brush, palette knife on canvas

image: 16 x 20 in / 41 x 51 cm

signed & framed

£ 1,250

[VIEW ONLINE](#)

Katie Patel

Expressive Abstract | Stockport, England

We have several of Katie's vibrant, emotionally rich, water surface paintings, featuring beautiful ripples and reflections, just released, and now available to view and purchase via the Oil website.



Above: "In Flow" (2024) by Katie Patel

KATIE PATEL

In Flow (2024)

acrylic on canvas

image: 20 x 24 in / 51 x 61 cm

signed & framed

£ 480

[VIEW ONLINE](#)

[VIEW ALL ARTWORKS](#)

Amanda Horvath

Contemporary Abstract | Derbyshire, England

Two new forest paintings have just arrived - one of a moonlit forest and the other in Autumnal colours. Both are striking paintings and feature Amanda's textural style and wonderfully tranquil light and shadow.



Above: "Silver Moon Forest" (2025) by Amanda Horvath

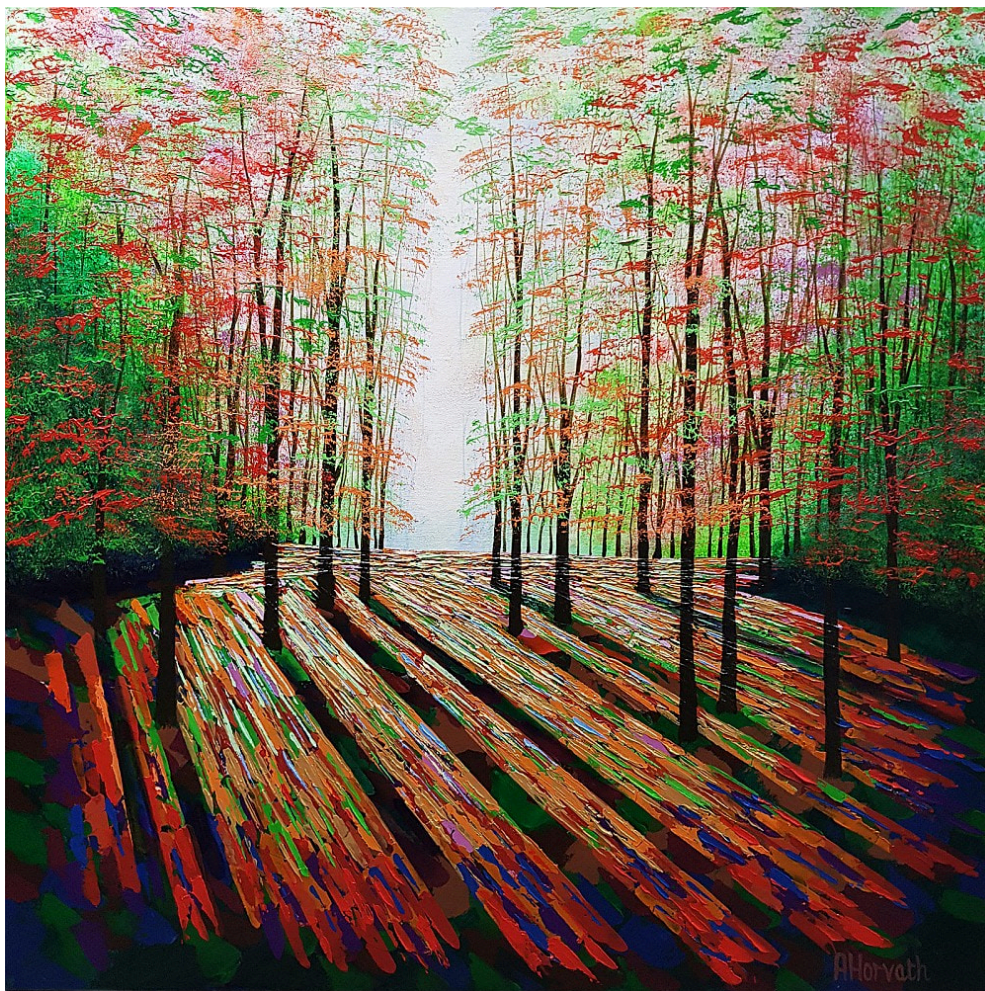
AMANDA HORVATH

Silver Moon Forest (2025)

acrylic on canvas with painted edges all around
image: 80 x 80 cm / 31 ½ x 31 ½ in
optional framing available
signed

£ 1,250

[VIEW ONLINE](#)



Above: "Fall in the Forest Light" (2025) by Amanda Horvath

AMANDA HORVATH

Fall in the Forest Light (2025)

acrylic on canvas with painted edges all around

image: 76 x 76 cm / 30 x 30 in

optional framing available

signed

£ 1,150

[VIEW ONLINE](#)

[VIEW ALL ARTWORKS](#)

Karen Wise

Contemporary Impressionism | Prestbury, Cheshire, England

In early October, we added several beautiful paintings to the website by this talented artist - all of them are in mixed media on acid-free paper, with the option to purchase them with mounts, framed under glass.

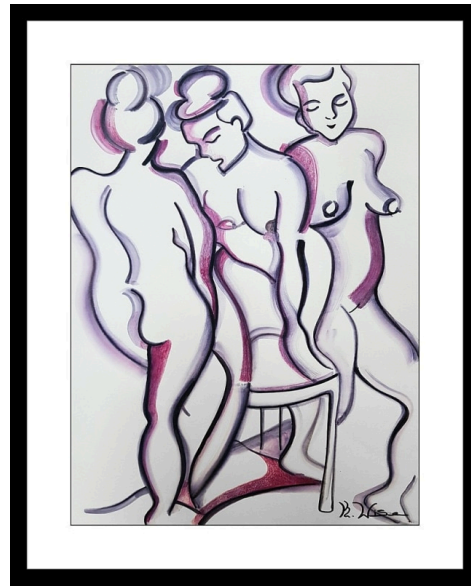


KAREN WISE

Ladies in Lavender

mixed media on acid free paper
unframed w/ option to frame under glass
image: 40 x 30 cm / 15 3/4 x 11 3/4 in
signed

£ 650



KAREN WISE

The 3 Graces

mixed media on acid free paper
unframed w/ option to frame under glass
image: 40 x 30 cm / 15 3/4 x 11 3/4 in
signed

£ 650



KAREN WISE



KAREN WISE

Blue Guitar

mixed media on acid free paper
unframed w/ option to frame under glass
image: 50 x 25 cm / 19 ¾ x 9 ¾ in
signed

£ 625

The Entertainer

mixed media on acid free paper
unframed w/ option to frame under glass
image: 50 x 25 cm / 19 ¾ x 9 ¾ in
signed

£ 625

[VIEW ALL ARTWORKS](#)

Sheila Scholes

Contemporary Abstract | Knutsford, Cheshire, England

Perhaps better known for her delightful abstract floral works, Sheila's just released two wonderfully abstract paintings, both featuring textured details and with a lovely wabi-sabi appearance.



Above: "Sequence of Events" (2025) by Sheila Scholes

SHEILA SCHOLES

Sequence of Events (2025)

mixed media on aluminium silk screen tray
103 x 100 cm / 40 ½ x 39 ¼ in
signed & framed

£ 2,250

[VIEW ONLINE](#)



Above: "As The World Turns" (2025) by Amanda Horvath

SHEILA SCHOLES

As The World Turns (2025)

mixed media on aluminium silk screen tray
103 x 100 cm / 40 ½ x 39 ¼ in
signed & framed

£ 2,250

[VIEW ONLINE](#)

[VIEW ALL ARTWORKS](#)

Ancient Art Crystals

Presentation Quality Amethyst Geodes

We have two, very large, presentation quality, butterfly geodes, expertly cut and polished, and sited on custom-built steel stands, both currently on display in the gallery.

Both geodes were sourced from Ametista do Sul, at the very southern tip of Brazil - a region famed for its very high quality, amethyst deposits.

Mainland UK delivery is included in the price of the butterfly geodes and international shipping is possible upon request.



Above: "Extra Large Amethyst Geode Butterfly Wings"

ANCIENT ART CRYSTALS

Extra Large, Amethyst Geode Butterfly Wings

With an ethereal presence and striking visual balance, this exquisite Brazilian Amethyst Geode has been precision-cut, expertly polished, and reimagined as a pair of radiant "butterfly wings" mounted on a custom-crafted steel stand. The result is a

breath-taking fusion of natural beauty and refined artistry, where raw geology meets sculptural design.

Origin: Ametista do Sul, Rio Grand do Sul, Brazil

Geode age: est. 1.7 - 2 billion years

Gross weight: approx. 115 kg / 253 lb

Geode weight: approx. 100 kg / 220 lb

Height in stand: 1.82 m / 71 ¾ in.

Stand footprint: 46 cm² / 18 in.²

£ 18,750

[VIEW ONLINE](#)

Slightly shorter, but wider than its heavier brother above, and *rare in both size and quality*, amethyst formations of this calibre are seldom encountered. The copper and quartz inclusions, the depth of colour, the large form crystallisation, and the overall symmetry of the specimen, elevate this piece beyond a mineral display, into the realm of collectible art.



Above: "Large Amethyst Geode Butterfly Wings"

ANCIENT ART CRYSTALS

Extra Large, Amethyst Geode Butterfly Wings II

Origin: Ametista do Sul, Rio Grand do Sul, Brazil

Geode age: est. 1.7 - 2 billion years

Gross weight: approx. 100 kg / 220 lb

Geode weight: approx. 84 kg / 185 lb

Height in stand: 1.58 m / 62 ¼ in.

Stand footprint: 41 cm² / 16 in.²

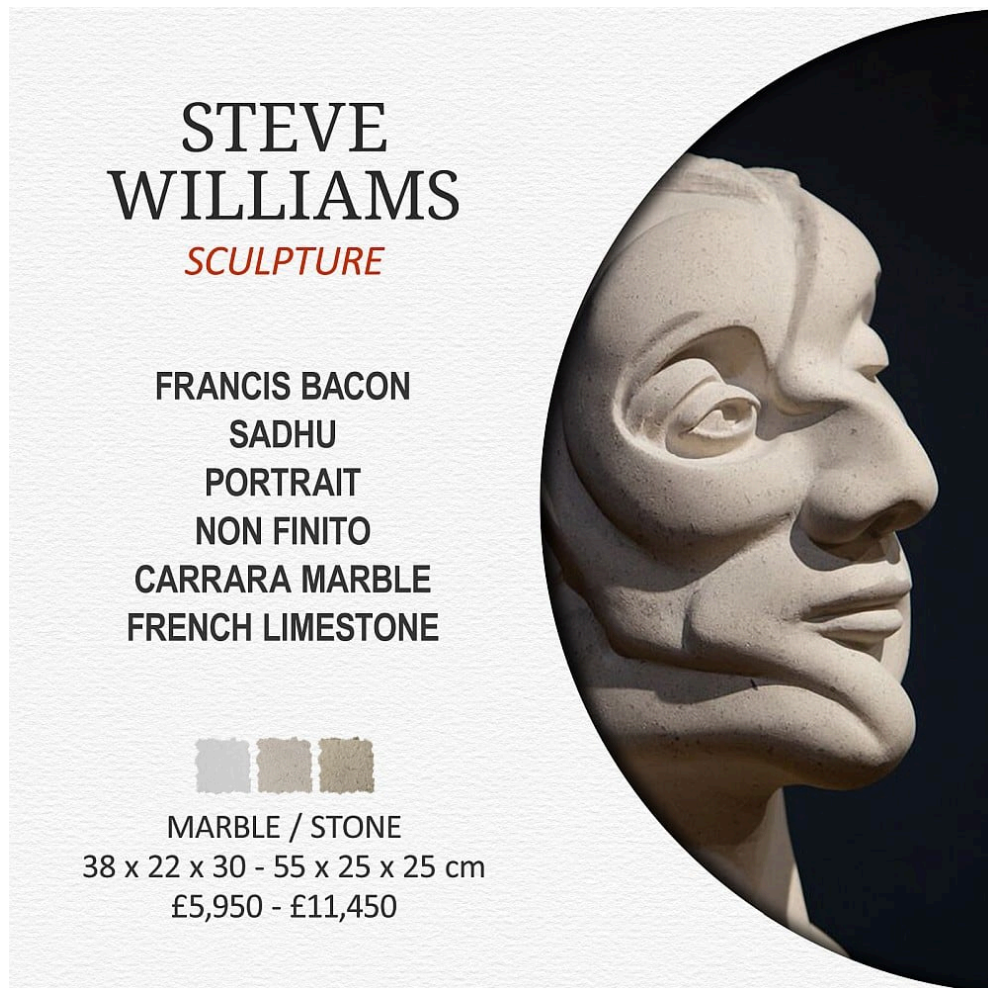
£ 16,950

[VIEW ONLINE](#)

The Style Guide - NEW

We've added a single page, image-based, summary guide of the artists, to the website. It provides a quick visual overview, highlighting the artists style, medium as well as the available sizes and price ranges for their artworks.

The style guide can be found at <https://oilartadvisory.com/style-guide>.



Above: An example artist entry on the style guide web page

Looking ahead

In the coming month or two, we're expecting a new geisha oil painting from Simon Quinn, new art vases from Pietro Sanna, a new wildlife painting from

Kerry Ann Lyons, plus original paintings by a U.S. based artist, who'll be announced shortly.

New arrivals...

Visit our [New Arrivals](#) page to see the artworks as they arrive in the gallery. The page consists purely of images, with the latest artwork displayed in the top left. If you like what you see, then clicking an image brings up more information. From there, clicking on the artist's name takes you to their works page, which displays all of their available artworks.



Above: A screen capture from the homepage of the Oil website, showing the latest artworks to arrive in the gallery.
TIP: Clicking on the "♥ NEW ARRIVALS »" title when on the homepage, also links to the comprehensive new arrivals page.

Spread the cost



INTEREST-FREE FINANCE

Oil is approved by Own Art to offer 0% financing on all of our original paintings, sculptures and decorative furnishings.*

[READ MORE](#)

*Unfortunately, this excludes photographic prints and works in our secondary market artworks category.



OIL ART ADVISORY

OPEN 6 DAYS: TUESDAY to SUNDAY & 24/7 ONLINE

8, King Street, Knutsford, Cheshire WA16 6DL UK

01565 758744 • enquiries@oilartadvisory.com

<https://oilartadvisory.com>

© The copyright of all artworks is retained by the originating artist or artists. All rights are reserved.

[Read this email online](#) | [Unsubscribe](#) | [Update your preferences](#) | [Visit our home page](#) | [Our privacy policy](#)

8, King Street
Knutsford
Cheshire
WA16 6DL
United Kingdom