



Just arrived...

August didn't hold back! We've got bold new furniture from renowned British designer **Tom Faulkner**, a show-stopping gold-detailed, art-vase by Sardinian born ceramicist **Pietro Sanna**, and two glorious *Big Sky* coastal landscapes by the Lancastrian artist **Neil Wilkinson**.

Plus, Knutsford's very own **David Boardman** swings in with a lively new golfer, **Kara Strachan** joins us with the first of her gorgeous dry-brush florals and landscapes, and **Simon Quinn**, the talented former Moorcroft Potteries painter, has unveiled a powerful new oil painting.

And don't miss our upcoming David Boardman **exhibition** titled "A NEW TAKE ON AN AGE-OLD PASSION", which runs from Saturday 20th September for one week. *Details follow further down.*

Tom Faulkner

British Furniture Designer | London, England & New York, USA



Tom Faulkner and staff member working on a Papillon side table in their Swindon manufacturing facility.

Tom Faulkner is a designer and manufacturer of exquisite furniture and accessories and started "making things", as he puts it, more than 25 years ago, but it was his discovery of metalwork that led him to establish his eponymous brand in 1996.

His design style could be described by a few signature qualities: clean lines, distinctive silhouettes, simplicity, and beautiful materials...

[READ MORE](#)

Capricorn Plinths by Tom Faulkner

The Capricorn design is guided by classical principles like symmetry, balance, and simplicity. As a plinth, it offers a sleek and understated platform for treasured art objects, or even a beautifully arranged bouquet. It can be constructed in a choice of materials and finished in either standard or specialist options.

Alternatively, it can be built in stainless steel and hand-polished to perfection for a futuristic feel. Finally, the top can be fitted with a 15mm glass plate or left as bare metal.

Available in two sizes: 110 or 120 cm tall, however, like most of the Tom Faulkner range, it can also be manufactured to a client's size preference when required.



Above: Capricorn Plinth manufactured in Copper and finished in Tom Faulkner's Bottle Green patina.
Now available to view in our Knutsford Gallery



Above: Various Tom Faulkner Capricorn Plinths, including hand polished Stainless Steel, Anthracite, Copper with a Bottle Green patina, Steel with a Scorched Earth patina, Dark Bronze with a glass top

TOM FAULKNER

Capricorn Plinths

Available Materials: copper, steel, stainless steel, bronze

Finishes: hand applied standard finishes plus various specialised finishes

Optional top: 15mm toughened glass top

Lead time: 10 weeks

Dimensions:

h 110 w 23 d 45 cm or

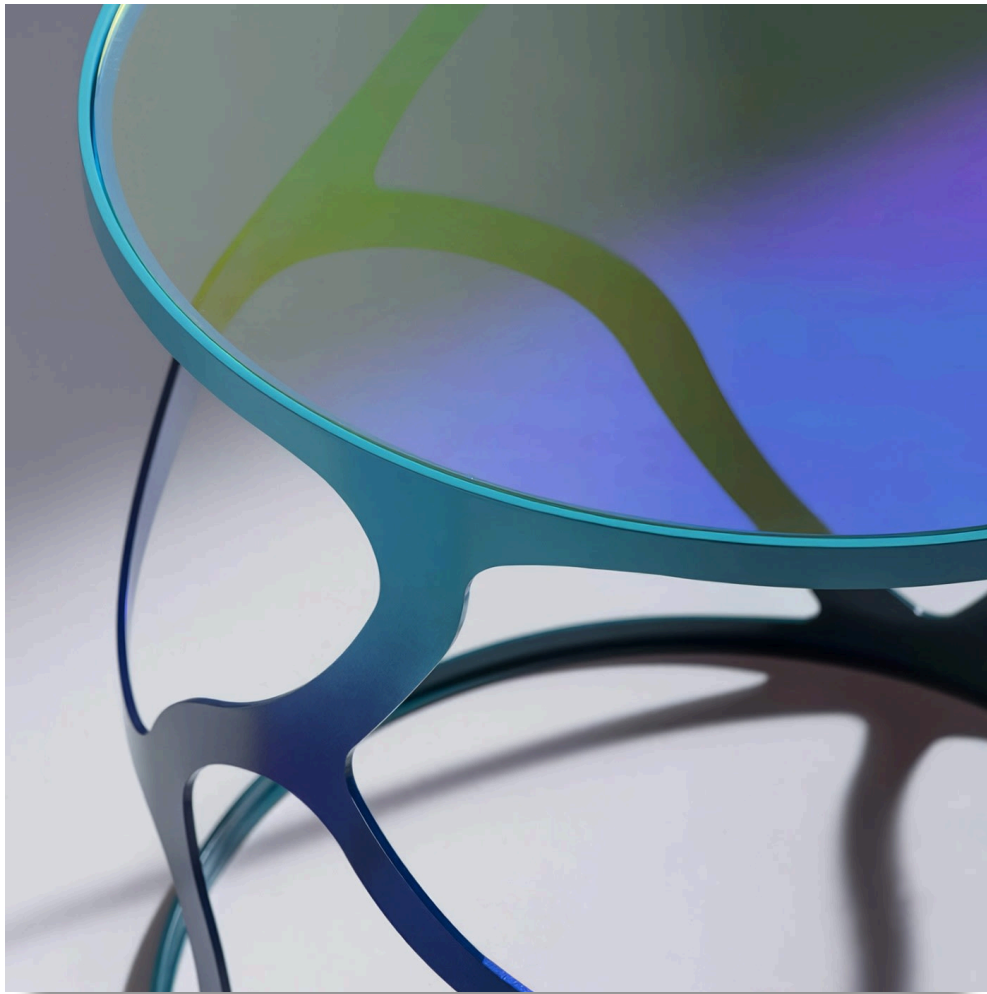
h 120 w 26 d 40 cm

Bespoke sizes available upon request

Prices from £ 3,390

[VIEW ONLINE](#)

Papillon Side Tables by Tom Faulkner



Above: Steel Papillon Side Table in Ulysses Blue with a dichroic glass top



Above: Various Tom Faulkner Papillon Side Tables shown in a range of colourful finishes with either clear or dichroic glass tops. A Papillon Bedside Table with a drawer is also shown, finished in Malabar

TOM FAULKNER

Papillon Side and Bedside Tables

Materials: steel or bronze

Finishes: hand applied standard finishes plus various specialised finishes

Optional tops: clear glass, dichroic glass, marble

Lead time: 10 weeks

Side tables dimensions:

h 50 diameter 50 cm or

h 60 diameter 60 cm

Bedside table dimensions

h 65 diameter 45 cm

Bespoke sizes available upon request

Papillon Side Tables: Prices from £ 2,850

Papillon Bedside Tables: Prices from £ 5,570

[VIEW ONLINE](#)

Pietro Sanna

Italian Ceramicist | York, England



Above: "Can Only Get Better" (2025) - A hand made art vase by Pietro Sanna. The image shows 3 different views of the same art vase

PIETRO SANNA

Can Only Get Better - Hand made, Hand Painted Art Vase

Detailed with 24K gold lustre and containing a unique, hand painted artwork narrative, the latest art vase by Pietro Sanna features a hand built earthenware clay vase with pink glaze, underglazes, coloured glazes, transparent gloss glaze.

Height: 21.5 cm | 8 ½ in.

Diameter: 12 cm max. | 8 ½ in.

£ 1,100



Above: Another view of "Can Only Get Better" by Pietro Sanna

[VIEW ONLINE](#)

Neil Wilkinson

Coastal Landscapes | Lancaster, Lancashire, England



Above: "Big Sky From Silverdale" by Neil Wilkinson, 70 cm x 100 cm

NEIL WILKINSON

Big Sky From Silverdale

original painting

oil on canvas

70 x 100 cm | 27 ½ x 39 ¼ in

signed and framed

£ 2,500

[VIEW ONLINE](#)



Above: "Big Sky Over Black Combe" by Neil Wilkinson, 70 cm x 100 cm

NEIL WILKINSON

Big Sky Over Black Combe

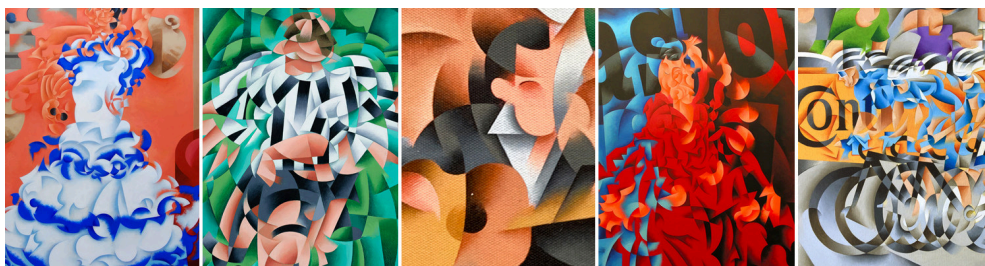
original painting
oil on canvas
70 x 100 cm | 27 ½ x 39 ¼ in
signed & framed

£ 2,500

[VIEW ONLINE](#)

David Boardman

Contemporary Abstract | Knutsford, Cheshire, England



"A desire to represent on canvas the beauty
of movement in all its myriad forms..."



Above: "The Most Important Shot..." (2025) by David Boardman

DAVID BOARDMAN

The Most Important Shot... (2025)

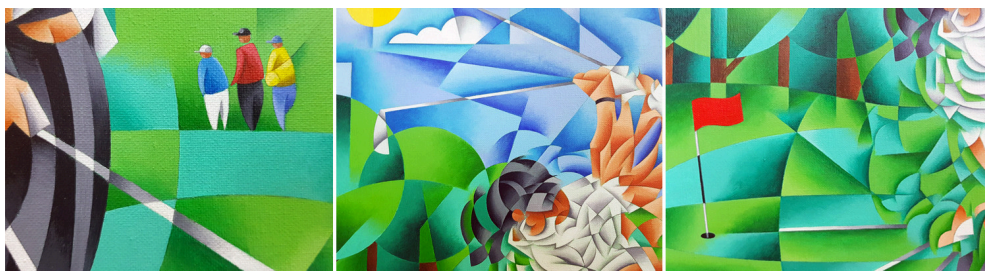
original painting

acrylic on canvas

60 x 50 cm (canvas size) 23 ½ x 19 ¾ in

signed & framed

£ 2,450



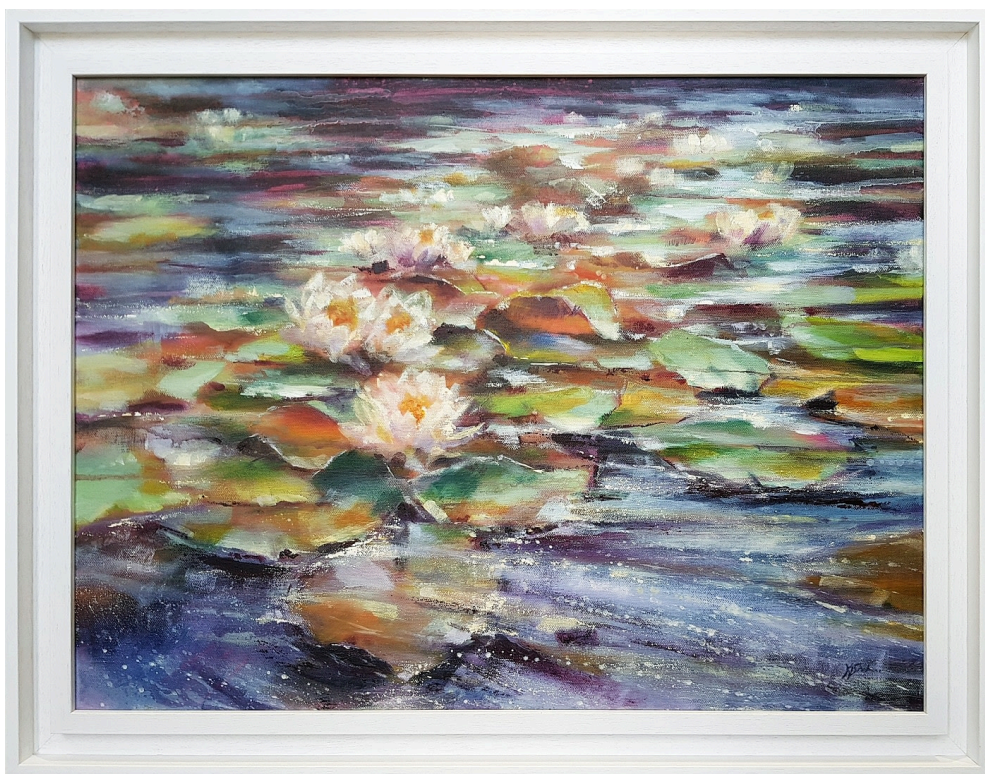
Above: Detail highlight photographs of "The Most Important Shot..." by David Boardman

[VIEW ONLINE](#)

Kara Strachan

Expressive Realism | Staffordshire, England

New to Oil Art Advisory, Kara Strachan's style is rooted in expressive realism, where technical precision is fused with an intuitive, emotional response to the natural world. Working in acrylics and mixed media, she layers underpaintings in complementary opposite tones, building depth and resonance beneath the surface. Her signature use of dry brush techniques creates atmospheric textures, while fluid mediums introduce movement, flow, and an almost elemental energy across the canvas.



Above: "Echoes in the Lake" (2025) by Kara Strachan

KARA STRACHAN

Echoes in the Lake (2025)

original painting
acrylic - dry brush, palette knife
on box canvas
18 x 24 in | 45.7 x 61 cm
signed & framed

£ 1,250

[VIEW ONLINE](#)



Above: "Lily Drift" (2025) by Kara Strachan

KARA STRACHAN

Lily Drift (2025)

acrylic - dry brush, palette knife
on canvas
24 x 24 in | 61 x 61 cm
signed & framed

£ 1,500

[VIEW ONLINE](#)

Simon Quinn

Figurative Portrait Artist | Biddulph, Staffs. England



"Quinn's paintings possess a haunting, cinematic quality"



Above: "Transparency of a Moment" (2025) by Simon Quinn

SIMON QUINN

Transparency of a Moment (2025)

Original Painting

Oil on canvas

76 x 61 cm | 30 x 24 in

Signed & Framed

£ 3,000

[VIEW ONLINE](#)

Upcoming Exhibition

"A MODERN TAKE ON AN AGE-OLD PASSION"

Artist: DAVID BOARDMAN

When: 20 - 26 SEPTEMBER

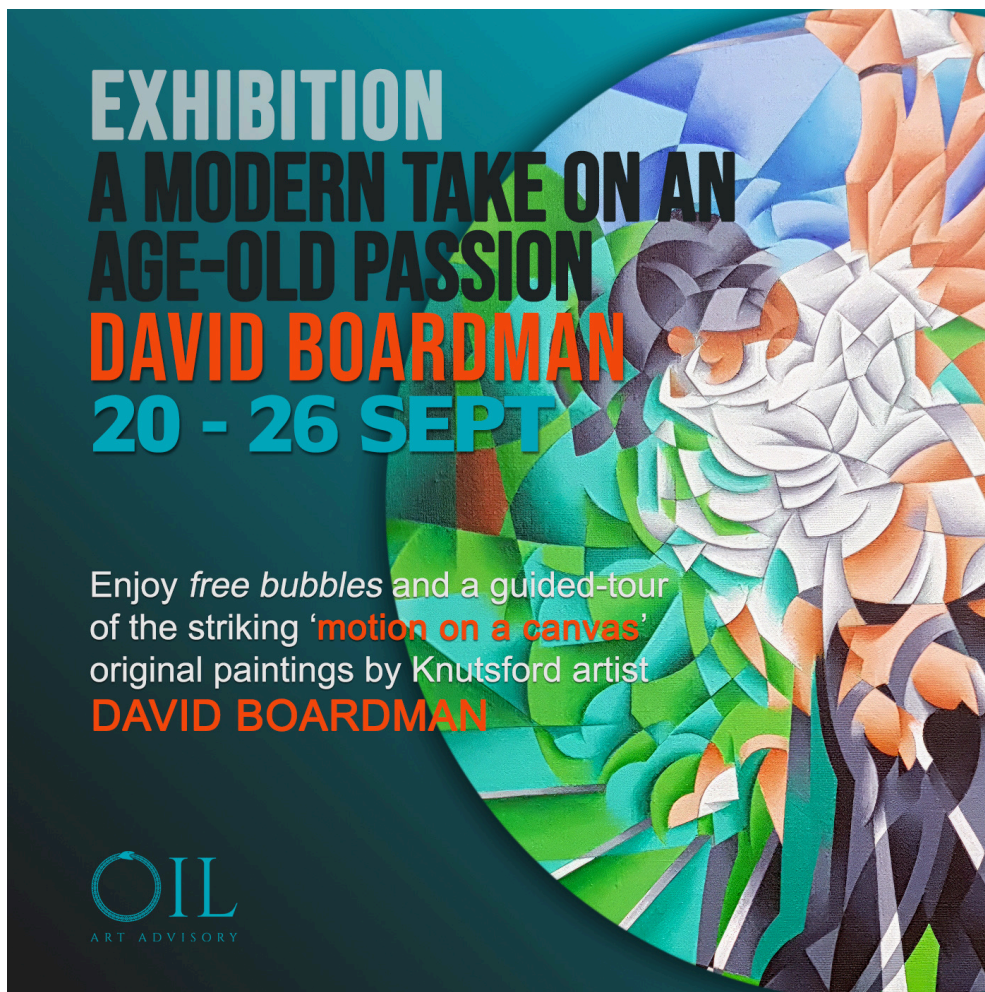
Where: THE OIL ART ADVISORY GALLERY | 8, KING ST, KNUTSFORD, CHESHIRE
WA16 6DL

Tel: 01565 758744

Email: rsvp@oilartadvisory.com

Don't miss the chance to see our entire portfolio of original paintings by Knutsford artist David Boardman, who's produced a unique body of work capturing movement on canvas. Subjects include Spanish dancers, football, golf, boxing and cycling - each one is a technical marvel as well as being a beautiful work of art in itself.

[VIEW EXHIBITION ONLINE](#)



EXHIBITION
A MODERN TAKE ON AN
AGE-OLD PASSION
DAVID BOARDMAN
20 - 26 SEPT

Enjoy *free bubbles* and a guided-tour of the striking '**motion on a canvas**' original paintings by Knutsford artist **DAVID BOARDMAN**

OIL
ART ADVISORY

Looking ahead

In the coming month we're expecting new originals from artist Katie Patel who paints wonderfully evocative water and reflections, often featuring a bokeh-like effect. Katie's work will also be made available to view and purchase from the website.

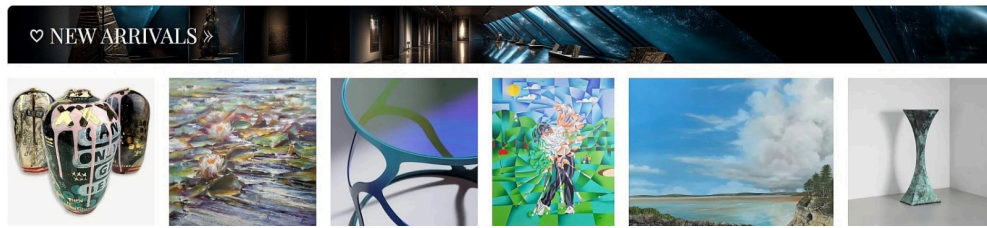


Above: "Bathed in Light", "In Flow" and "Liquid Gold" - All original paintings by Katie Patel

New Arrivals...

Visit our [New Arrivals](#) page to see the artworks as they arrive in the gallery. The page consists purely of images, with the latest artwork displayed in the top left. If you like what you see, then clicking an image brings up more information. From

there, clicking on the artist's name takes you to their works page, which displays all of their available artworks.



Spread the cost



INTEREST-FREE FINANCE

Oil is approved by Own Art to offer 0% financing on all of our original paintings, sculptures and decorative furnishings.*

[READ MORE](#)

*Unfortunately, this excludes photographic prints and items in our secondary market artworks category



OIL ART ADVISORY

OPEN 6 DAYS: TUESDAY to SUNDAY & 24/7 ONLINE
8, King Street, Knutsford, Cheshire WA16 6DL UK
01565 758744 • enquiries@oilartadvisory.com
<https://oilartadvisory.com>

[Read this email online](#) | [Unsubscribe](#) | [Update your preferences](#) | [Visit our home page](#) | [Our privacy policy](#)

8, King Street
Knutsford
Cheshire
WA16 6DL
United Kingdom