

OIL

ART ADVISORY

independently sourced original artworks

ORIGINAL PAINTINGS • SCULPTURES • DESIGNER FURNISHINGS • ART RESALES

This edition: Italian, contemporary figurative artist, **Leonardo Passeri** joins our portfolio, with the release of 3 of the 7 original panels from his epic work, 'Urbanica' - a 9.1m composition, depicting scenes that reflect the fragile balance between human progress and collapse.



Above: The seven panels that make up the polyptych "Urbanica" (2019), by Leonardo Passeri. The complete artwork measures 200 cm high x 910 cm long x 3.5 cm deep, and is created with acrylic and enamel on wood panels

Plus four new releases from Staffordshire figurative artist, **Cliff Warner**, from his series of wabi-sabi styled, fashion models, and we also welcome Somerset artist **Caroline Slater** to the fold, with a wonderful series of stylised and colourful, contemporary figurative paintings.

And finally some **gallery news** - April brings both a change to our gallery opening hours and an increase in the maximum amount of interest-free credit available to our clients.

Leonardo Passeri

Contemporary Figurative / Perugia, Italy

An Italian contemporary artist born in Assisi in 1982 and based in the region of Perugia, where he works from his studio and gallery in Brufa di Torgiano. His artistic foundation includes studies at Central Saint Martins School of Arts in London, an experience that exposed him to British philosophical thought and avant-garde cultural movements. Influences ranging from experimental contemporary art to cyber-goth aesthetics and visionary traditions have shaped his artistic language, encouraging a deeply introspective approach to image-making.

Passeri's work explores the evolving relationship between humanity, technology and imagined futures through carefully structured compositions in large formats.

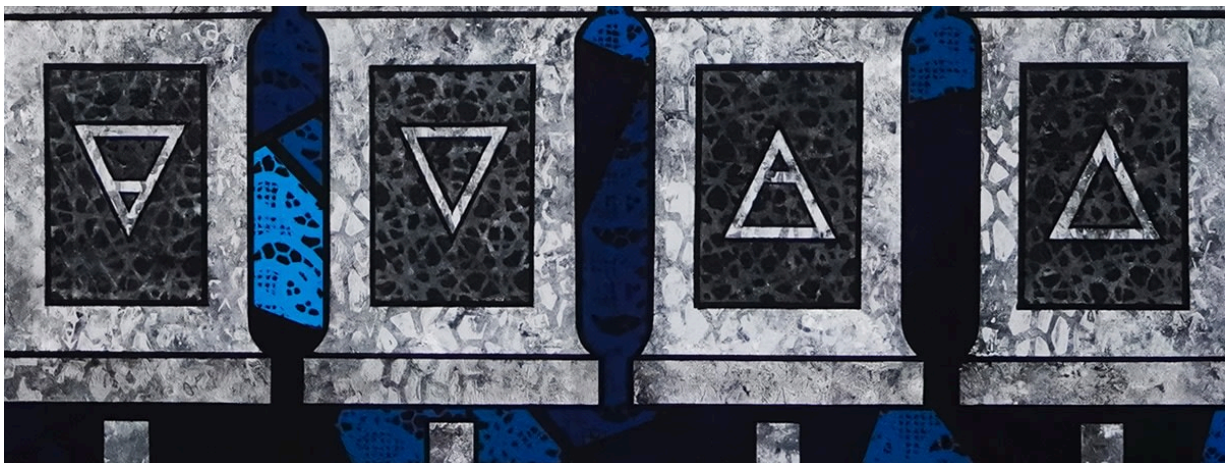
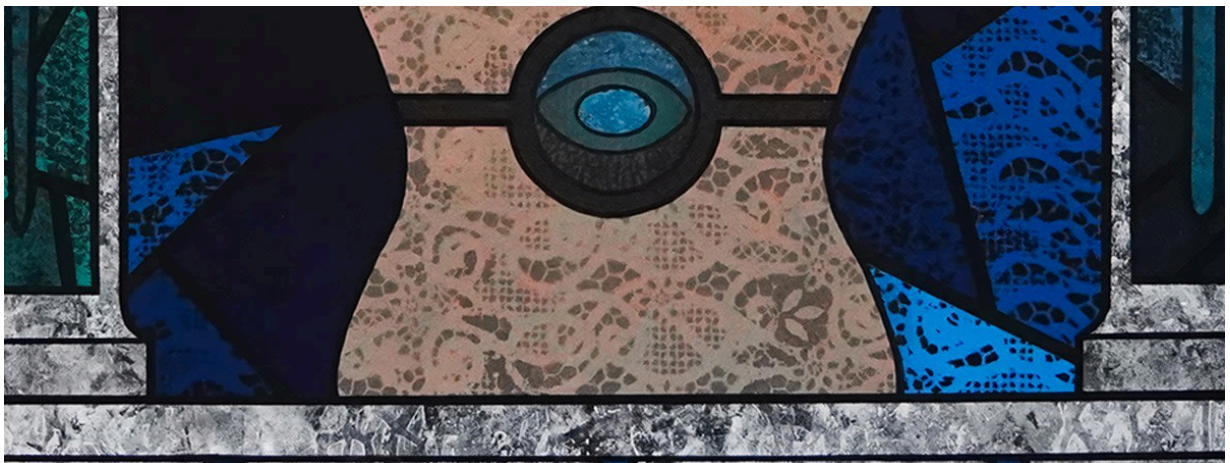
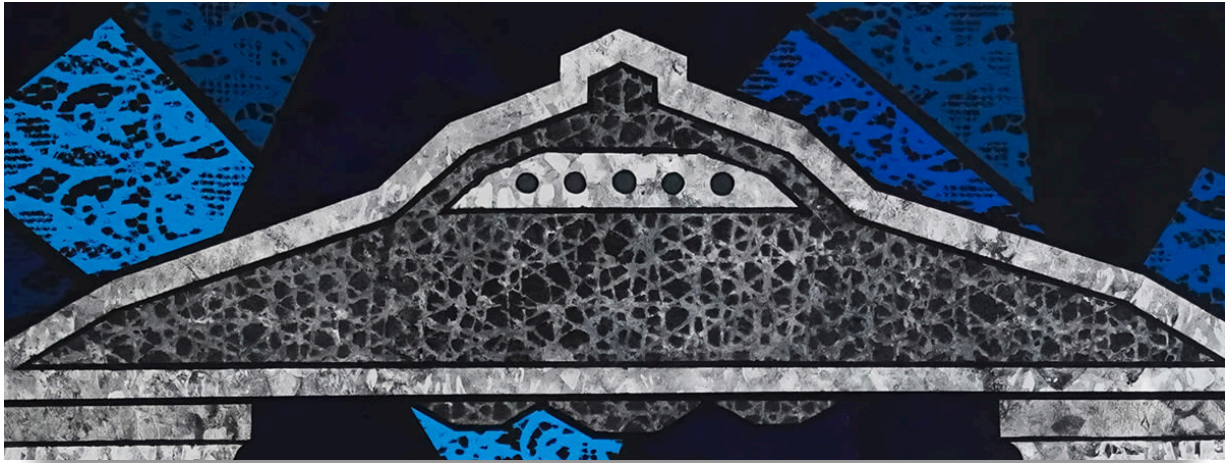
Passeri's three original paintings, featured below, will be available to view in the Knutsford gallery from early April.



Above: Leonardo Passeri's "*Justice Machine*" (2019), 200 x 130 cm



Above: Panel #1, "Mother Nature" (2019), 200 x 130 cm, by Leonardo Passeri - A photograph of the entire panel



Above: Closeup photographs of "*Mother Nature*" (2019) by Leonardo Passeri, showing the iconography, and the intricate patterns and rich colouration of the enamelling

LEONARDO PASSERI

Mother Nature (2019)

original

acrylic and enamel on wood panel

panel weight: 18.3 kg

panel size: 200 cm tall x 130 cm wide x 3.5 cm deep

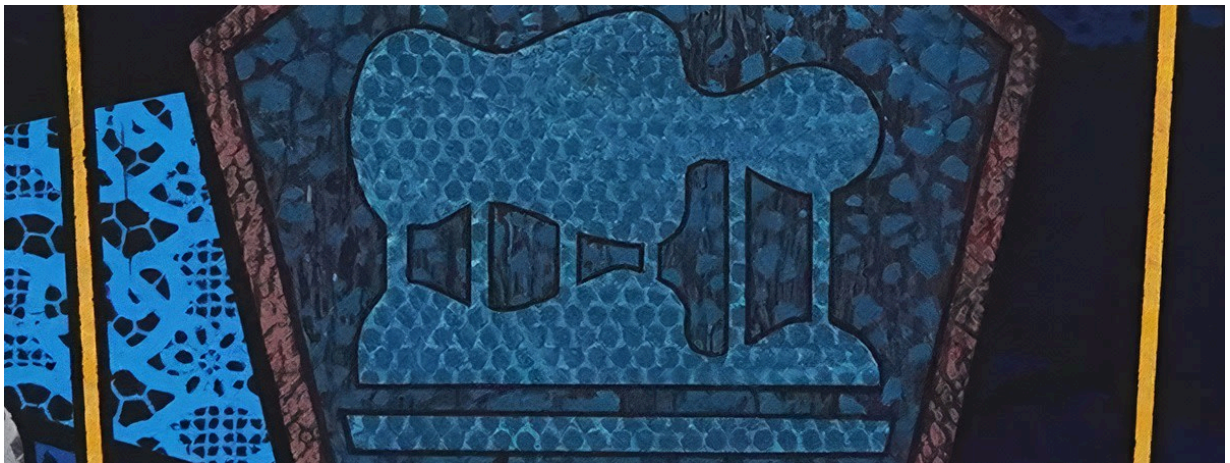
panel 1 from the 7 panel series 'Urbanica'

£ 17,500

[VIEW ONLINE](#)



Above: Panel #4, "Justice Machine" (2019), 200 x 130 cm, by Leonardo Passeri - A photograph of the entire panel



Above: Closeup photographs of "Justice Machine" (2019) by Leonardo Passeri, showing the iconography, and the intricate patterns and rich colouration of the enamelling

LEONARDO PASSERI

Justice Machine (2019)

original

acrylic and enamel on wood panel

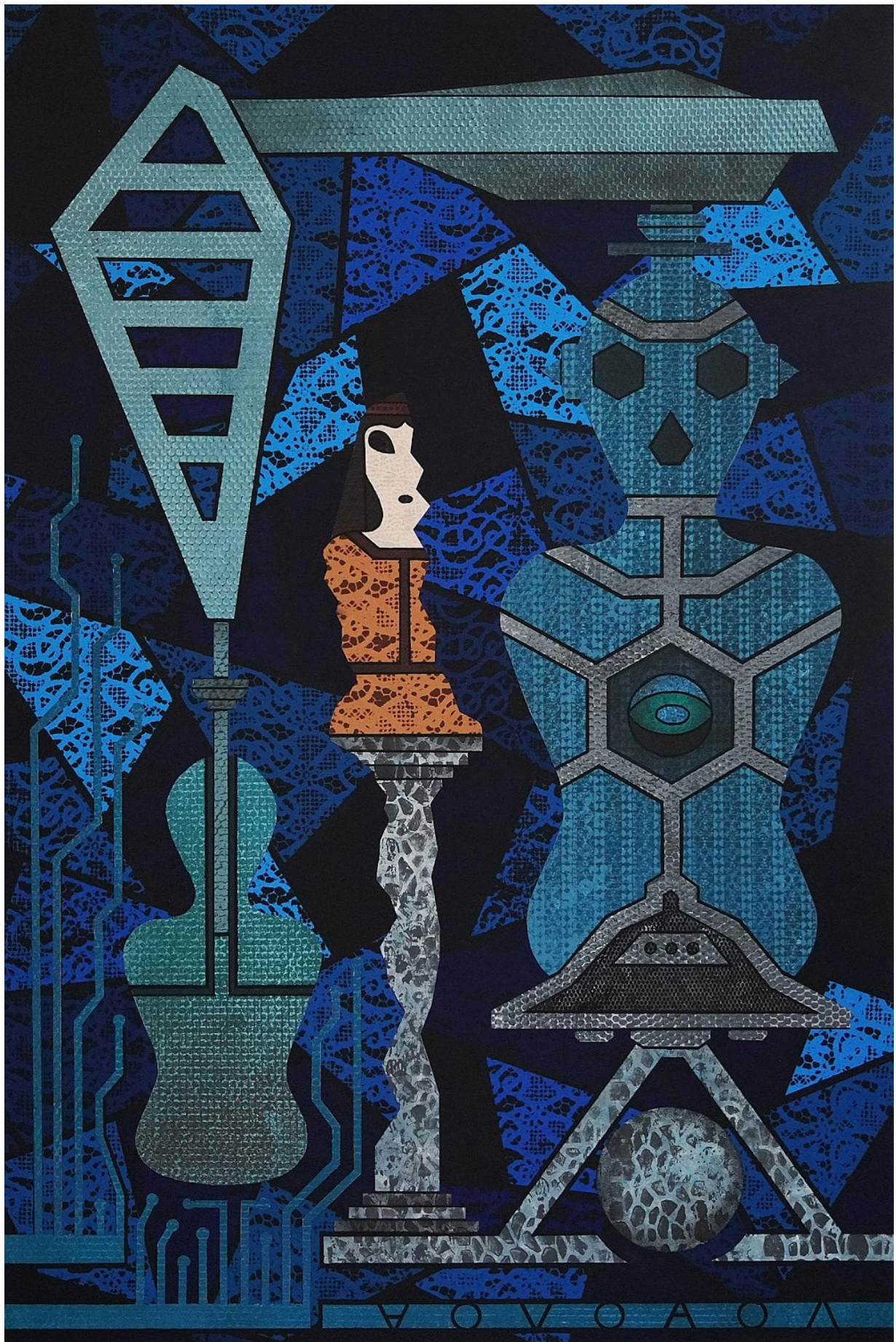
panel weight: 18.3 kg

panel size: 200 cm tall x 130 cm wide x 3.5 cm deep

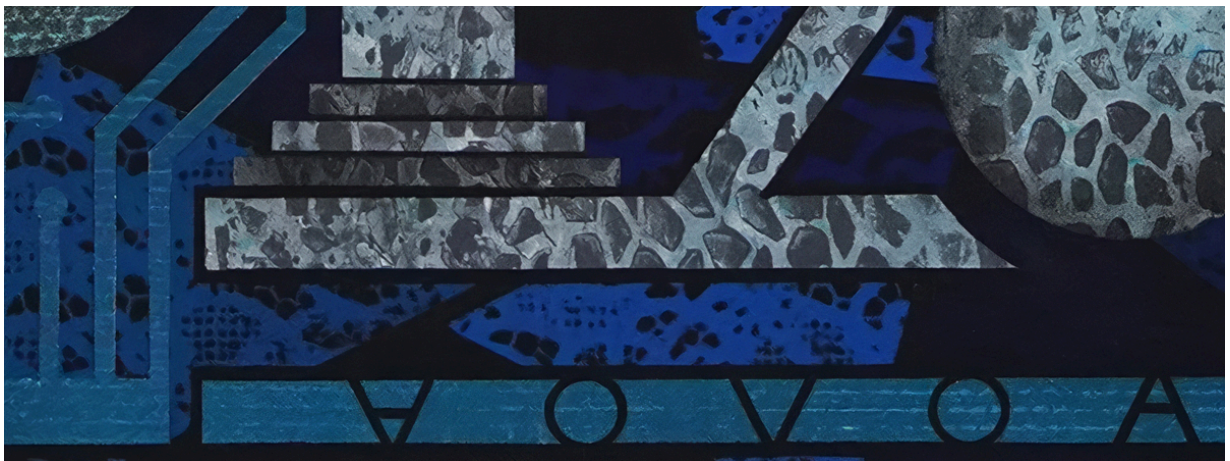
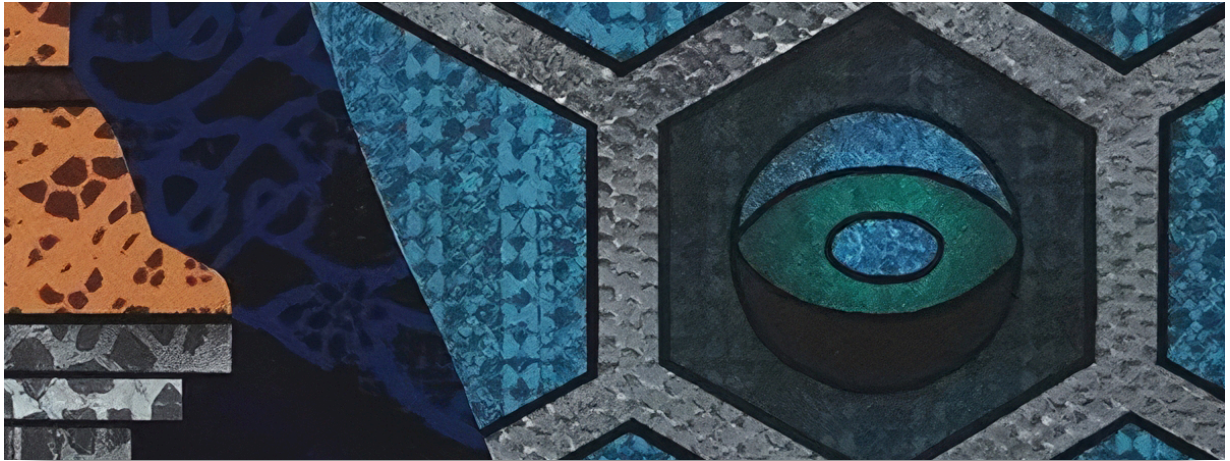
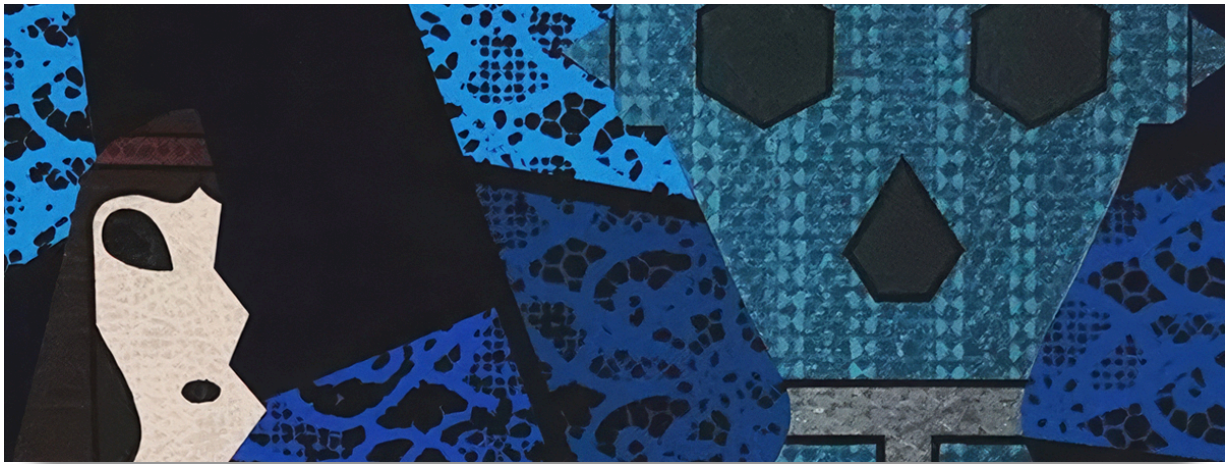
panel 4 from the 7 panel series 'Urbanica'

£ 17,500

[VIEW ONLINE](#)



Above: Panel #7, "Earth Exploitation" (2019), 200 x 130 cm, by Leonardo Passeri - A photograph of the entire panel



Above: Closeup photographs of "Earth Exploitation" (2019) by Leonardo Passeri, showing the iconography, and the intricate patterns and rich colouration of the enamelling

LEONARDO PASSERI

Earth Exploitation (2019)

original

acrylic and enamel on wood panel

panel weight: 18.3 kg

panel size: 200 cm tall x 130 cm wide x 3.5 cm deep

panel 7 from the 7 panel series 'Urbanica'

£ 17,500

[VIEW ONLINE](#)

[VIEW ALL WORKS ONLINE](#)

Cliff Warner

Contemporary Figurative Expression | Burton-on-Trent, Staffs. England

Incorporating the philosophy of wabi-sabi, Cliff skillfully navigates the interplay of imperfection and transience in his art, which primarily explores the themes of solitude and reflection.



Above: "Hyaku-oku" (2026), acrylic and charcoal on canvas, by Cliff Warner

CLIFF WARNER

Hyaku-oku (2026)

original

acrylic and charcoal on canvas

canvas size: 30 x 20 in. / 76 x 51 cm

signed

currently unframed

£ 2,250 (includes framing)

[VIEW ONLINE](#)



Above: "*Nijuu-yon*" (2026), acrylic and charcoal on canvas, by Cliff Warner

CLIFF WARNER

Nijuu-yon (2026)

original

acrylic and charcoal on canvas

canvas size: 30 x 20 in. / 76 x 51 cm

signed

currently unframed

£ 2,250 (includes framing)

[VIEW ONLINE](#)



Above: "Issen" (2026), acrylic and charcoal on canvas, by Cliff Warner

CLIFF WARNER

Issen (2026)

original

acrylic and charcoal on canvas

canvas size: 30 x 20 in. / 76 x 51 cm

signed

currently unframed

£ 2,250 (includes framing)

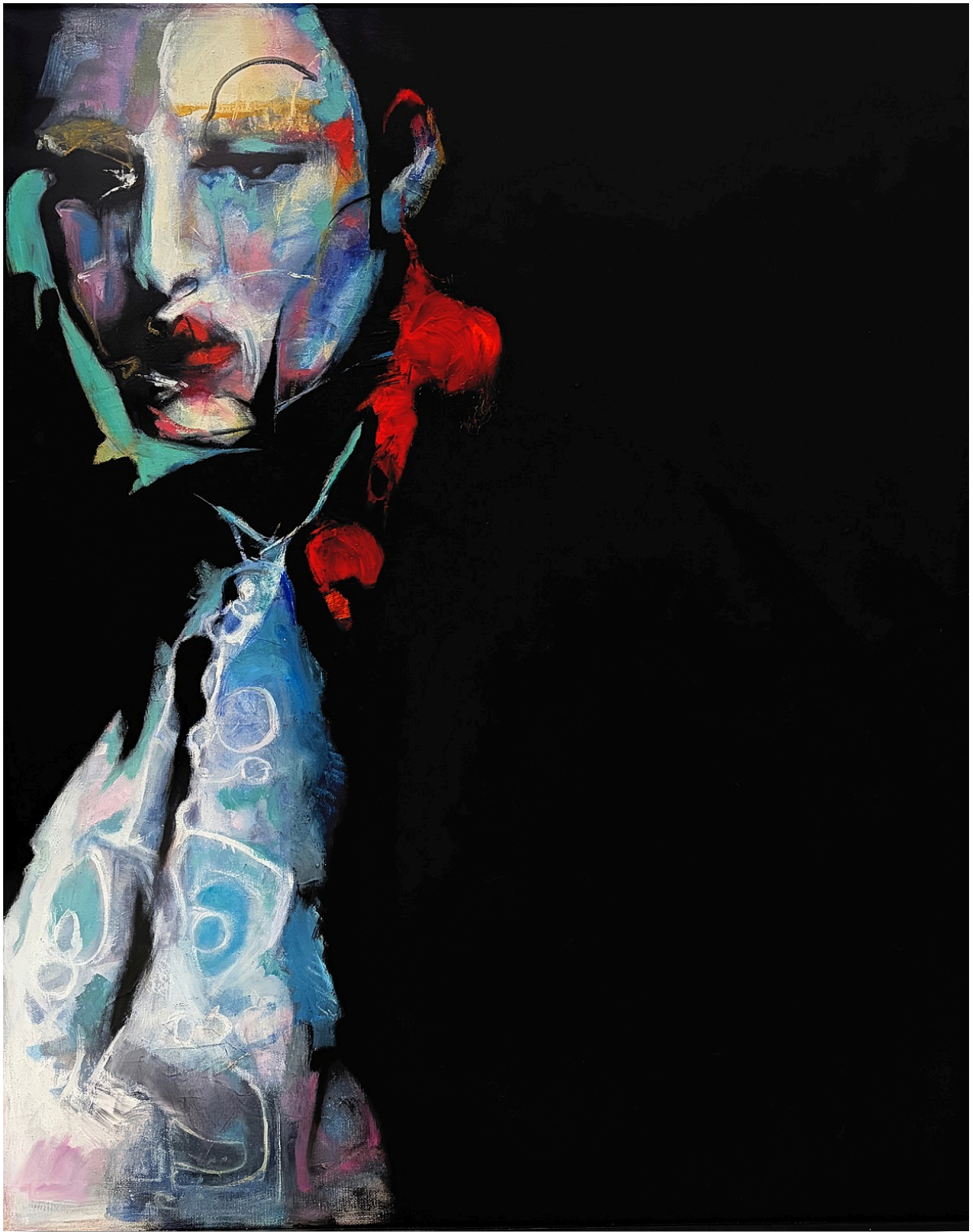
[VIEW ONLINE](#)

[VIEW ALL WORKS ONLINE](#)

Caroline Slater

Contemporary Figurative | Somerset, England

Slater's portraiture captures both known and unknown subjects, creating emotive images shaped by influences from cinematic imagery, music, fashion and cultural identity. Faces often emerge from moody fields of colour and expressive lines, inviting viewers to interpret character, mood and narrative within each work. Her paintings frequently blur the boundary between representation and abstraction, allowing form and atmosphere to coexist within the same visual space.



Above: Caroline Slater, "*The Count*" (2021), oil on canvas

CAROLINE SLATER

The Count (2021)

original

oil on box canvas

canvas size: 30 x 24 in / 76 x 61 cm

currently unframed

£ 2,500 (includes framing)

VIEW ONLINE



Above: Caroline Slater, "Keith Richards" (2020), oil on canvas

CAROLINE SLATER

Keith Richards (2020)

original

oil on box canvas

canvas size: 36 x 36 in / 91.5 x 91.5 cm

currently unframed

£ 3,250 (includes framing)

VIEW ONLINE



Above: Caroline Slater, "Desert Dawn" (2021), oil on canvas

CAROLINE SLATER

Desert Dawn (2020)

original
acrylic on box canvas
canvas size: 24 x 18 in / 61 x 46 cm
currently unframed

£ 2,000 (includes framing)

[VIEW ONLINE](#)

[VIEW ALL WORKS ONLINE](#)

News...

What's new at Oil Art Advisory

NEW GALLERY HOURS

SUN: 11AM - 4PM
MON: CLOSED
TUE: BY APPOINTMENT ONLY
WED - SAT: 10AM - 5PM

NEW OPENING HOURS

From April 2026, our Knutsford gallery will be closed on Mondays, with Tuesdays strictly reserved for pre-arranged, private client viewings.

[READ MORE](#)

OWN ART

0% FINANCE UP TO £5000
NO DEPOSIT
PAY BACK OVER 10 MONTHS

0% FINANCE - NEW £5K LIMIT

Next month, clients will be able to take advantage of up to £5000 of interest-free credit, to purchase original artworks from Oil Art Advisory.

[READ MORE](#)

[VIEW ALL NEWS](#)

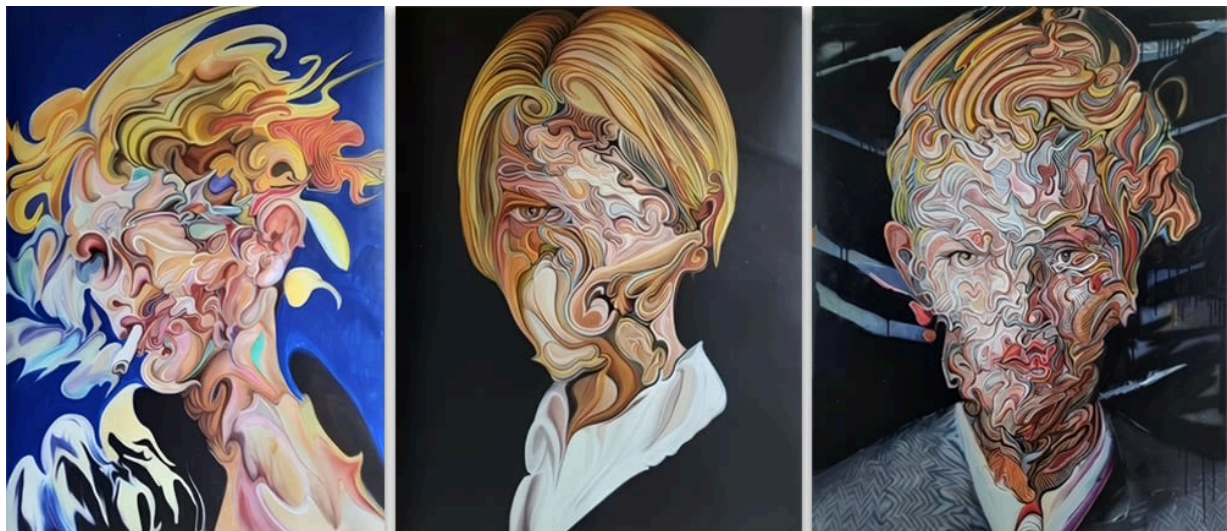


Coming soon...

6 original paintings from the surrealist painter, **Mark Sheeky**, are currently in processing for inclusion on the website, and should be available in the next couple of days.



Plus, new paintings from the German, abstract portrait artist, **Dimitar Hinkov** are expected shortly, and his latest series features the late, great, David Bowie, rendered in Hinkov's richly textured oils.



Above: Dimitar Hinkov's "Bowie" series of oil paintings

Plus, we'll have new paintings from the British artist Kerry Ann Lyons, featuring some unusual birds from around the world. *In the coming weeks, Kerry's 'birds' series will also become available to view and purchase on the website, for the very first time.*



Above: "European Bee Eaters" (2025) by Kerry Ann Lyons

New arrivals...

Visit our [New Arrivals](#) page to see the artworks as they arrive in the gallery. The page consists purely of images, with the latest artwork displayed in the top left. If you like what you see, then clicking an image brings up more information. From there, clicking on the artist's name takes you to their works page, which displays their complete portfolio.

♡ NEW ARRIVALS »



Above: A screen capture from the homepage of the Oil website, showing the latest artworks to arrive in the gallery.
TIP: Clicking on the "♡ NEW ARRIVALS »" title when on the homepage, also links to the comprehensive new arrivals page.



INDEPENDENTLY SOURCED
original paintings
sculptures
designer furnishings
ancient art crystals

LARGE FORMAT CANVASES
wall art and
installations, plus
large home, art consulting
with an interior designer

PASSIONATE ABOUT ART
expert knowledge,
art sourcing, commissioning,
authenticated resales,
& a platform for local artists

DACS
WE ACTIVELY
SUPPORT THE PRINCIPALS
OF THE DESIGN & ARTISTS
COPYRIGHT SOCIETY

VISA MASTERCARD AMEX Apple Pay G Pay

OWN ART INTEREST FREE FINANCE
IS AVAILABLE WITH
OWN ART

isd
inchbald
GRADUATE

© The copyright of all artworks is retained by the originating artist or artists. All rights are reserved.

[Read this email online](#) | [Unsubscribe](#) | [Update your preferences](#) | [Visit our home page](#) | [Our privacy policy](#)

The Oil Art Advisory Gallery
8, King Street
Knutsford
Cheshire
WA16 6DL
United Kingdom