



ART ADVISORY

JANE PINE

INSPIRED BY T. E. LAWRENCE



*independently
sourced
original
artworks*

JANE PINE
FIGURATIVE



Secrets Left Unspoken (2023)

oil on canvas

140 x 160 cm / 55 x 63 in

signed & framed

£ 15,000

THE HISTORICAL CONTEXT

On a fog-shrouded morning on Saturday 17th May 1919, artist Jane Pine's grandfather, Frederick Joseph Daw, survived a dramatic plane crash outside Rome. The aircraft, travelling from England to Cairo, was dangerously low on fuel when, in poor visibility, it clipped treetops during its landing attempt and crashed heavily into the ground. The impact destroyed the cockpit and overturned the aircraft, killing both the pilot and co-pilot.



The wreckage of the British Handley-Page O/400 aircraft, carrying T. E Lawrence and Frederick Joseph Daw.
Registration № D5439 from 58 Sqn RAF, en route to Cairo

Remarkably, Daw emerged almost unharmed, and upon hearing the cries of a fellow passenger trapped in the wreckage, he made his way into the tail section, freed the man from a tangle of parachute lines and silk and carried him to safety.

That injured passenger was none other than Thomas Edward Lawrence, the British Army officer, archaeologist, diplomat and writer, who is perhaps better known by the epithet, "Lawrence of Arabia". Lawrence had suffered a broken collarbone, several broken ribs and a punctured lung in the accident and Daw's rescue sparked a lifelong friendship between the two men, continuing up until Lawrence's death in a motorcycle accident on 13 May 1935.



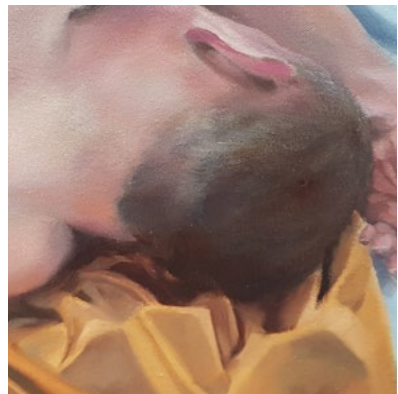
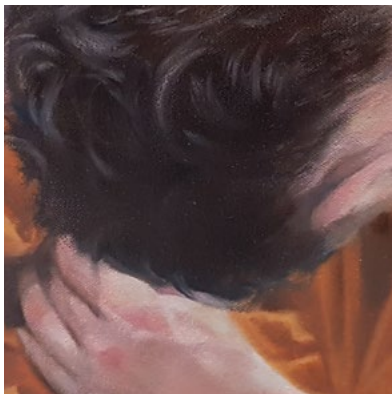
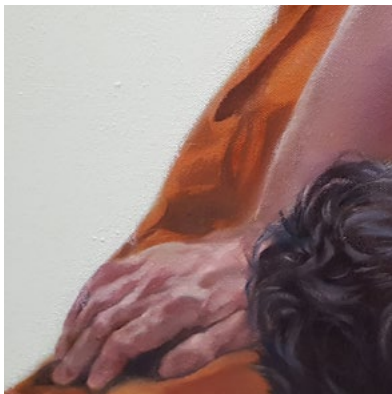
Above Left: T. E Lawrence. Above Right: Two photographs - overlaid, aligned and cropped - showing Jane Pine's original oil painting "Embody" (2023), during composition and upon completion.

In recent years, Jane has created a series of original oil paintings inspired by the bond forged between the two. Each work incorporates the flowing silk of the parachute that once entangled Lawrence, using it as a symbolic thread between survival, fragility, and trust.

The figures she paints — typically one or both men — are shown unclothed; not for provocation, but to express emotional vulnerability and the stripped-back humanity of two individuals marked by trauma, with their poses deliberately introspective and unguarded, echoing the moment when they confronted their own physical and emotional limits.



Above: Composite image showing Jane Pine's original oil painting "Secrets Left Unspoken" (2023), during composition and nearing completion.



The Space Between Us (2023)

oil on canvas

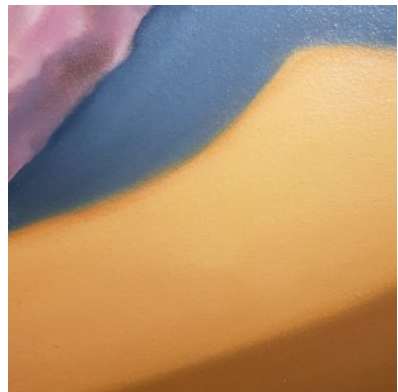
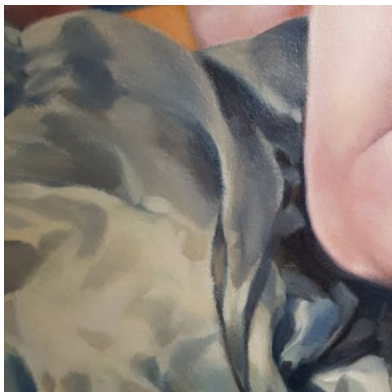
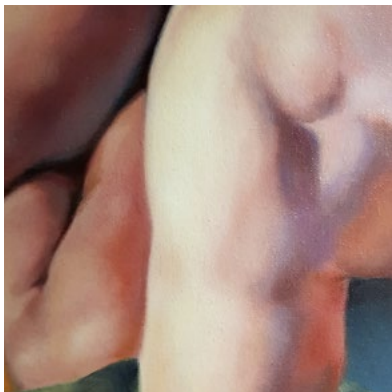
63 x 123 cm / 24 $\frac{3}{4}$ x 48 $\frac{1}{2}$ in

signed & framed

£ 4,500



Sanctuary (2023)
oil on canvas
123 x 63 cm / 48 ½ x 24 ¾ in
signed & framed
£ 4,500



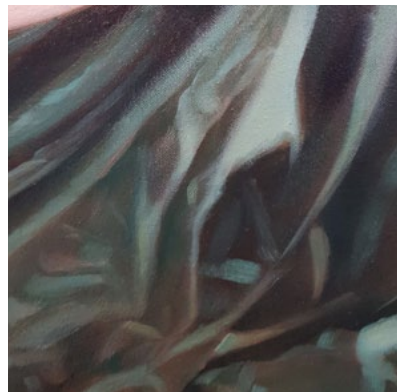
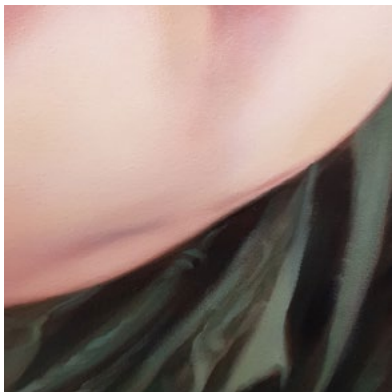
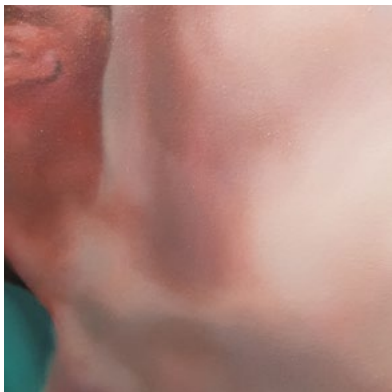
Unquiet Mind (2023)

oil on canvas

83 x 83 cm / 32 ¾ x 32 ¾ in

signed & framed

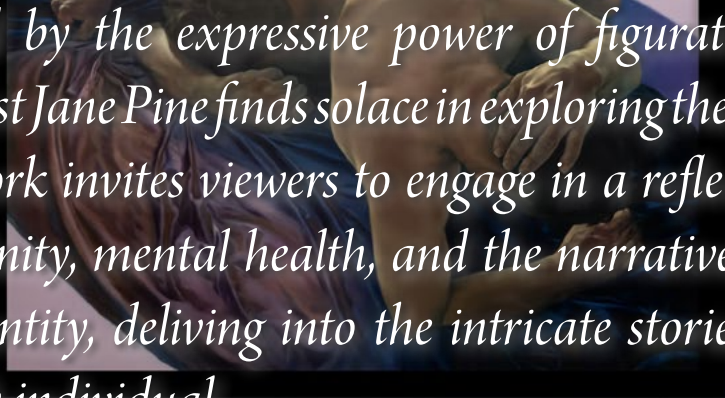
£ 4,000



Embody (2023)
oil on canvas
83 x 83 cm / 32 ³/₄ x 32 ³/₄ in
signed & framed
£ 4,000

JANE PINE

VIEW THE ARTIST'S PORTFOLIO AT
oilartadvisory.com/artists/jane-pine/works



Captivated by the expressive power of figurative paintings, British artist Jane Pine finds solace in exploring the human form, and her work invites viewers to engage in a reflective dialogue on masculinity, mental health, and the narratives constructed around identity, delving into the intricate stories that unfold within each individual.

THE OIL ART ADVISORY GALLERY

8, King Street
Knutsford
Cheshire
WA16 6DL
United Kingdom

FIND US

What3Words: [///bumping.prune.dust](https://www.what3words.com/#!/bumping.prune.dust)
Google Maps: [Oil Art Advisory](#)

ART GALLERY HOURS

Sun: 11am - 4pm
Mon: Closed
Tue: Private Viewings (by appointment only)
Wed - Sat: 10am - 5pm

CONTACT US

Tel: +44 (0)1565 758744
Email: enquiries@oilartadvisory.com

VIEWING & SALES WEBSITE

oilartadvisory.com